



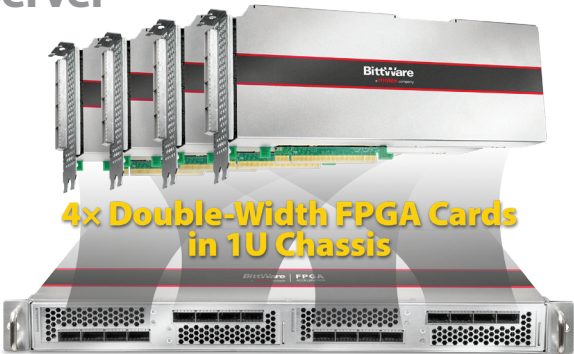
**TeraBox 1401B**  
1U FPGA Server

## Extreme Density Standard-Depth FPGA Server

1U, 4 card, PCIe Gen4 x16, AMD EPYC 7002 series

At the extreme of FPGA server density, the TeraBox 1401B gives the highest level of compute and network capability in a 1U chassis. This server provides twice the density of the typical 4U server and the power of 4 of our largest Achronix Speedster7t, Intel Stratix 10 or AMD UltraScale+ FPGAs.

This innovative product supports PCIe Gen4 and features an AMD EPYC processor in a standard rack depth chassis.

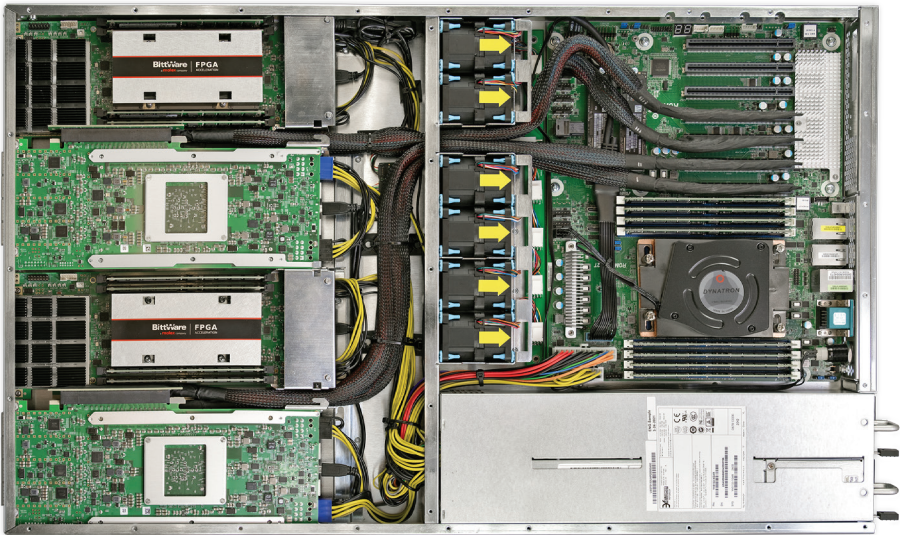


### key features

Up to  
**16 QSFP-DDs**  
for 32x 100G or  
128x 10/25G

**1U**  
4 FPGAs in a  
standard-depth  
1U server

Standard Height  
Double Slot  
Support for BittWare's full  
range of FPGA cards



### chassis key specs

- 1U depth, 28.25 in (71.75 cm)
- Processor: (1) AMD EPYC 7003 Series Processor
- Ethernet: 2x RJ45 10G base-T by Intel® X550-AT2, 1x RJ45 Dedicated IPMI LAN port by RTL8211E
- Memory: 8x DDR4 DIMMs
- Storage: 2x M.2
- Slots: 4x front panel PCIe Gen4 x16; 1x rear panel low-profile Gen4 x16 NIC slot
- Power supply: 1+1 AC 1300W, 110/220V

# TeraBox 1401B

1U FPGA Server

## BittWare FPGA Cards

The TeraBox 1401B supports up to four dual-slot BittWare PCIe FPGA cards. Choose from a variety of cards based on Achronix, AMD, and Intel FPGAs. System specs will vary greatly, depending on the FPGA card you select. For example, with four BittWare UltraScale+ PCIe cards, which support up to 512 Gbytes of DDR4 per card, the chassis can support as much as 2 Terabytes of DDR4 on the FPGA cards in 16 banks. With four Agilex cards using breakout cables, each chassis supports 48x 100GbE.

## Server Configuration

### Standard

- (1) AMD EPYC 7313 (3.0GHz, 16C/32T) Processor
- 128GB DDR4
- (2) 1TB M.2 (RAID1)
- (1+1) 1300W Power Supplies

Contact BittWare if this configuration is not exactly what you are looking for. BittWare can work with you to come up with a server configuration that suits your exact needs.

## BittWare 1U Server

The TeraBox 1401B server featuring AMD EPYC processor is exclusive to BittWare and is the ideal platform to unleash the energy-efficient acceleration of BittWare's FPGA cards. This FPGA-optimized 1U server delivers unrivaled performance density and value for a range of compute-intensive applications, including machine learning.

The server is assembled in the USA, is TAA compliant, and offers a 3-year warranty.

## The TeraBox Advantage

Choosing a TeraBox FPGA server means knowing you are getting a pre-configured and tested solution. This includes setup and installation of your FPGA cards and associated hardware, your choice of operating system, and development tools. Your TeraBox arrives ready for use—giving your team more time for development and deployment.

To learn more, visit [www.BittWare.com](http://www.BittWare.com)

v1 | last revised 2024.04.01

© BittWare 2024

Speedster is a registered trademark of Achronix Semiconductor Corp. UltraScale, Virtex, and Vivado are registered trademarks of AMD Corp. Agilex is a trademark of Intel Corp. All other products are the trademarks or registered trademarks of their respective holders.

**BittWare**  
a **molex** company